



MONTHLY MEMBERSHIP PROGRESS REPORT

Results as of: 5/31/2016

Multiple District 25

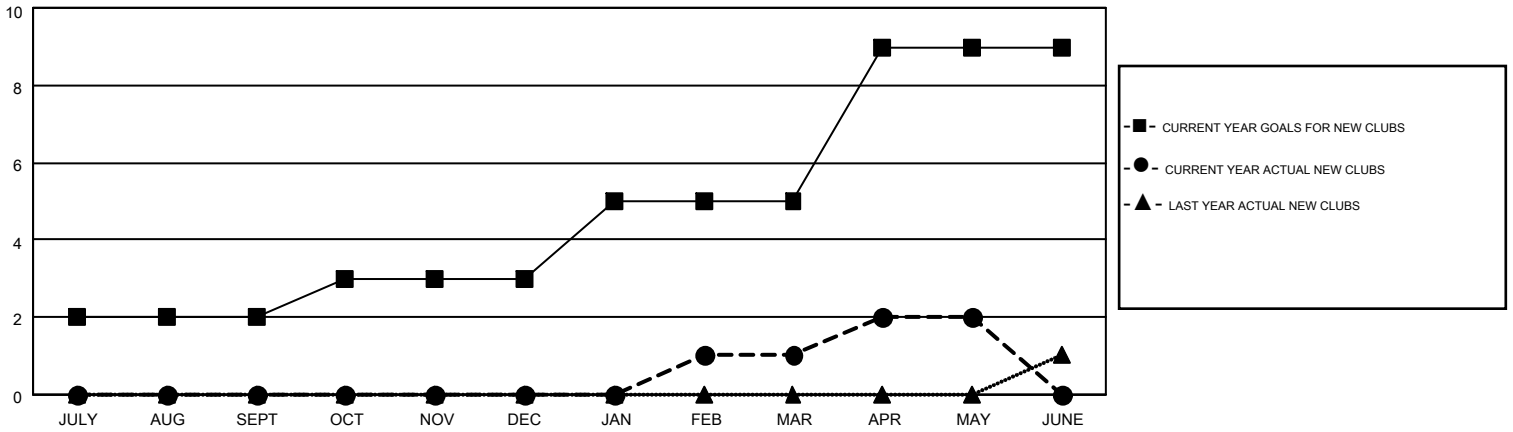
LOCATION: INDIANA

GMT: THOMAS MATNEY

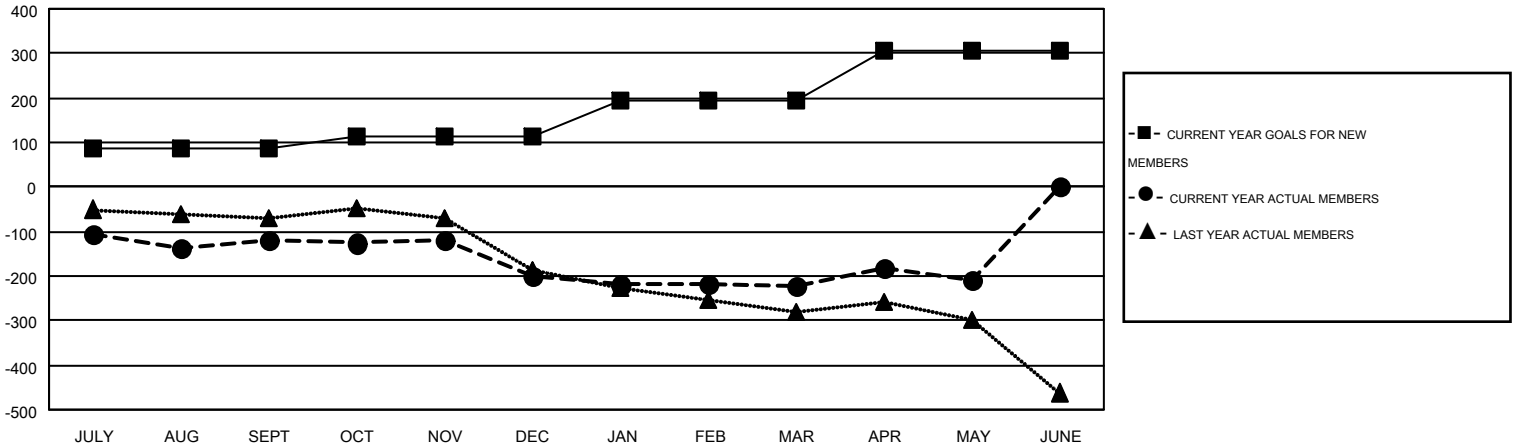
GMT CA 1

Clubs					Members				
RESULTS FOR 2015-2016					RESULTS FOR 2015-2016				
QUARTER	NEW CLUB GOAL	NEW CLUBS	DROPPED CLUBS	NET GAIN/LOSS	QUARTER	NEW MEMBER GOAL	CHARTER AND NEW MEMBERS ADDED	DROPPED MEMBERS	NET GAIN/LOSS
JULY/AUG/SEPT	2	0	2	-2	JULY/AUG/SEPT	87	202	321	-119
OCT/NOV/DEC	1	0	3	-3	OCT/NOV/DEC	25	203	285	-82
JAN/FEB/MAR	2	1	1	0	JAN/FEB/MAR	83	221	241	-20
APR/MAY/JUNE	4	1	1	0	APR/MAY/JUNE	112	180	168	12

GOALS AND ACTUAL NEW CLUBS CUMULATIVE



GOALS AND ACTUAL MEMBERS CUMULATIVE



DROPPED CLUBS: 7	239 CLUBS OF 400 ADDED 1 OR MORE NEW MEMBERS	<u>GENDER DISTRIBUTION</u>	
<u>DROPPED MEMBERS</u>		MALE	7,569 (72.84%)
DECEASED	180	FEMALE	2,822 (27.16%)
CLUB CANCELLED	25	CLICK HERE FOR HEALTH ASSESSMENT DATA	
OTHER	807	FAMILY UNIT MEMBERS	2,366
TOTAL	1,012	HEAD OF HOUSEHOLD	1,155
		NON-HEAD OF HOUSEHOLD	1,211